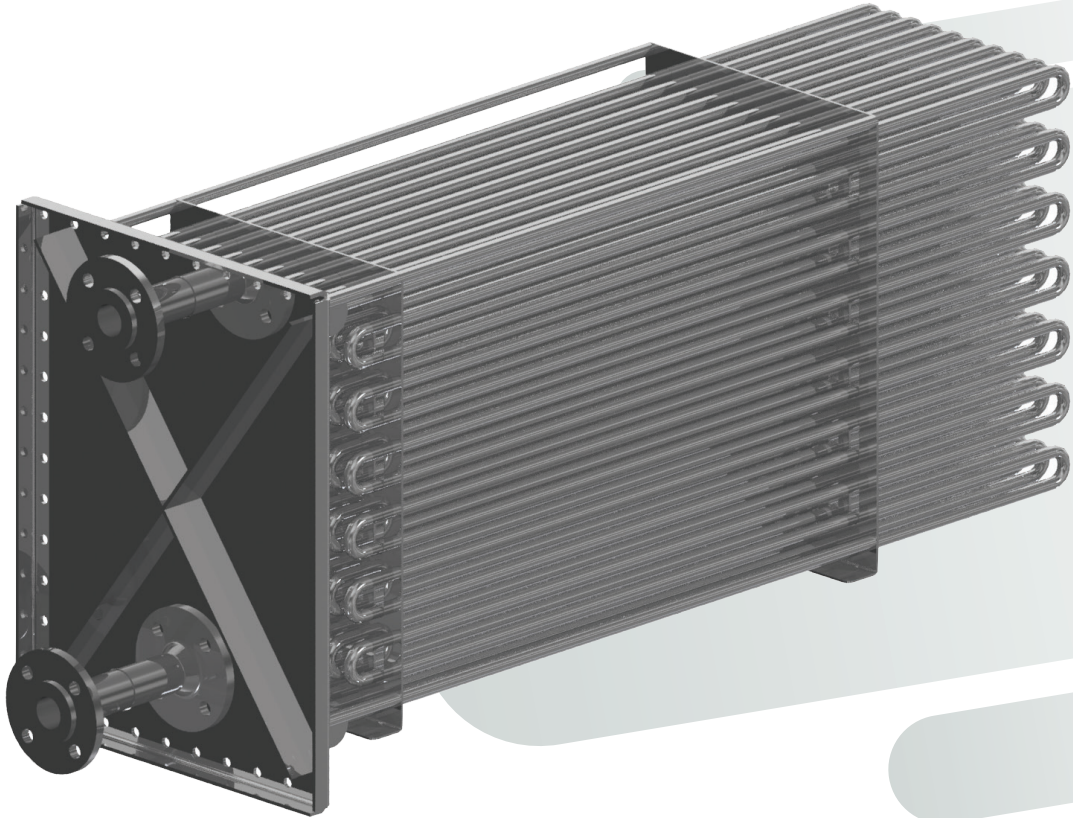




# DAV·S-snake



## About S-snake Family

### DESCRIPTION

DAV S-snake is an extremely versatile family of smooth tube heat exchangers [STHE].

Suitable for indirectly cooling / heating process gases and liquids or recovering energy in all those applications where finned tubes cannot be used due to fluids with a high fouling rate such as oily or dusty gases and sticky or sediment-filled liquids.

The smooth tubes used can be of various materials, such as carbon steel, stainless steel, Ni-Cr alloy or titanium.

A unique Dav Coil manufacturing procedure creates coils by

bending tubes instead of welding U-bends connections, reducing the possibility of leaks and cracks.

The smooth surface of the tubes can be cleaned by steam or with pressurized jet washer, for consequent low maintenance costs.

### ADVANTAGES

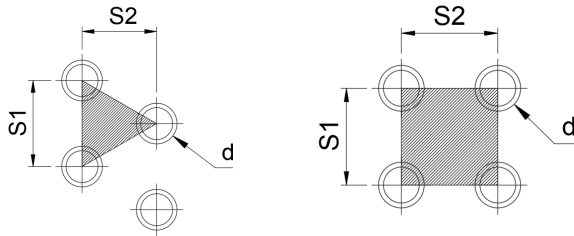
- Food grade materials
- Perfect in case of dirty medium
- Bespoke shapes
- Corrosion resistant materials
- Modular design
- Up to 90% seamless





## Geometries

All type of customized versions available on request



Triangular tube pitch arrangement

Type	S39	S51	S68	S45	S57	S78	S98
S1 [mm]	39	51	68	45	57	78	98
S2 [mm]	34	25,5	19,5	39	49	22,5	28,5
D [mm]	36	36	36	41	51	41	51

Square tube pitch arrangement

Type	Q39	Q51	Q68	Q45	Q57	Q78	Q98
S1 [mm]	39	51	68	45	57	78	98
S2 [mm]	39	39	39	45	57	45	57
D [mm]	36	36	36	41	51	41	51

\*other options available on request

## Tube length

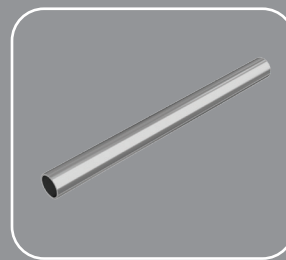
Ø TUBE [mm]	Tube Length [mm]					
	500	1000	1500	3000	6000	>6000
16.0	x	x	x	x		
21.3	x	x	x	x	x	
26.9	x	x	x	x	x	
33.7			x	x	x	x
42.4			x	x	x	x
48.3			x	x	x	x
60.3				x	x	x
76.1				x	x	x
88.9				x	x	x

## Materials

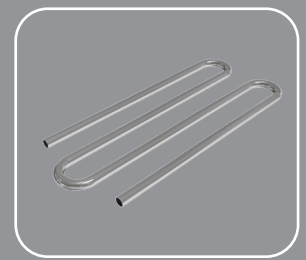
- Inox Aisi 304
- Inox Aisi 316L
- Inox Aisi 316Ti
- Inox Aisi 321
- Inox Aisi 309
- Titanum
- Nichel Alloy

\*other options available on request

## Smart Details



● SMOOTH TUBES FOR DIRTY MEDIUMS



● NO WELDED ELBOWS JOINTS

## Applications



Food & Beverage



Transport



Farming & Greenhouse



Chemical



Heavy Industry



Depuration



Naval

