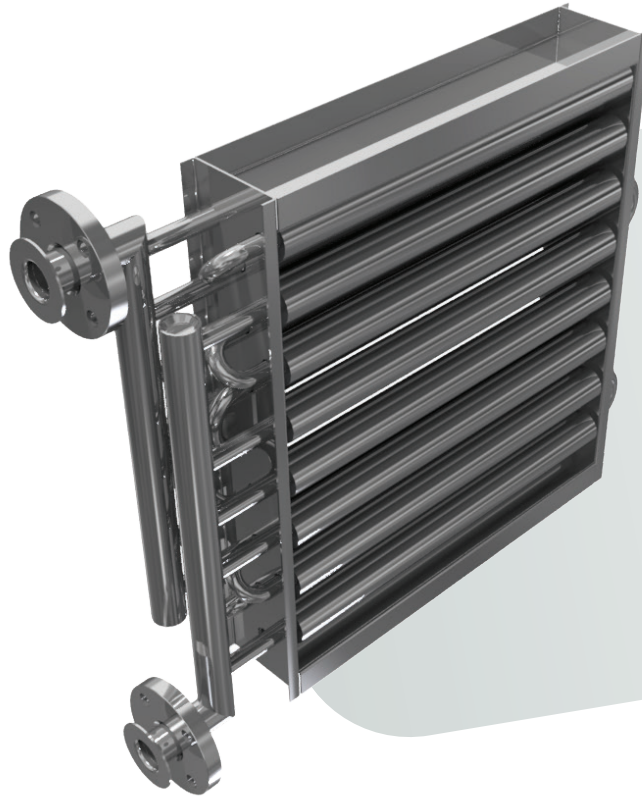




# DAV·Helix



## About Helix Family

### DESCRIPTION

Finned tube heat exchangers [FTHE] have tubes with transverse fins to enhance the heat exchange rate by increasing the effective heat transfer area between the tubes and surrounding fluid, which is usually gaseous such as air or process gases, while inside tubes may flow either gas, water, steam or oil.

The materials used are chosen according to the applications: carbon steel or stainless steel for pipes, and copper, carbon steel, galvanized steel, stainless steel or aluminum alloy for fins.

The DAV Helix are best suited for

air coolers or high temperature and heavy-duty applications.

Compared to round-tube plate-fin heat exchangers, the FTHE is suitable to much higher temperatures: up to 350°C depending on selected materials.

Mechanically is very robust: each finned tube can slide absorbing different thermal dilatations without deformation of the structure and stress on weldings. An exclusive Dav Coil's manufacturing procedure creates coils by bending finned tubes instead of welding U-return bends, which reduces possible leakages and cracks.

### ADVANTAGES

- Heavy duty applications
- Acid proof materials for corrosive environments
- Up to 90% of welded joints less
- Up to 350 °C working temperature





## Materials

Fin Material	Fin Thickness (mm)	Fin Pitches (mm)							Geometry							
		3,0	3,7	4,0	6,0	8,0	10,0	12,0	S39	S51	S68	S45	S57	S78	S98	
Carbon Steel	0,4	x	x	x	x	x	x	x	x	x	x	x	x	x	x	x
Pre Galvanized Steel	0,4	x	x	x	x	x	x	x	x	x	x	x	x	x	x	x
Aluminum	0,5	x	x	x	x	x	x	x	x	x	x	x	x	x	x	x
Aluminum alloy 5754	0,8		x	x	x	x	x	x	x	x	x	x	x	x	x	x
Copper	0,3	x	x	x	x	x	x	x	x	x	x	x	x	x	x	x
Stained copper	0,3	x	x	x	x	x	x	x	x	x	x	x	x	x	x	x
Inox Aisi 304	0,4	x	x	x	x	x	x	x	x	x	x	x	x	x	x	x

\*other options available on request

Tube Materials	Pre Galvanized Steel	Copper
	Inox Aisi 304	Titanium
	Inox Aisi 316L	Aluminum
	Inox Aisi 321	Nichel Alloy

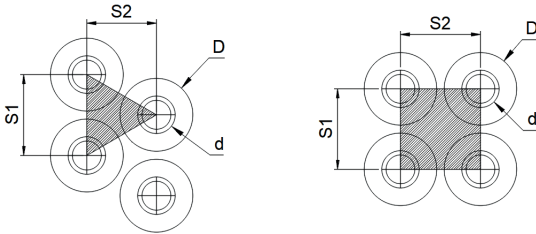
\*other options available on request





## Geometries

ALL TYPE OF CUSTOMIZED VERSIONS AVAILABLE ON REQUEST



Geometry							
	S39	S51	S68	S45	S57	S78	S98
S1	39	51	68	45	57	78	98
S2	34	25,5	19,5	39	49	22,5	28,5
D	36	36	36	41	51	41	51

\*other values available on request

Geometry							
	Q39	Q51	Q68	Q45	Q57	Q78	Q98
S1	39	51	68	45	57	78	98
S2	39	39	39	45	57	45	57
D	36	36	36	41	51	41	51

\*other values available on request

## Options

### Connection types:

threaded nozzle, flange, smooth tube for brazing on site.

### Casing designs:

without casing, side plates only, complete casing, air-tight casing, removable cartridge-type.

### Casing materials:

carbon steel, galvanized steel, stainless steel, aluminum.

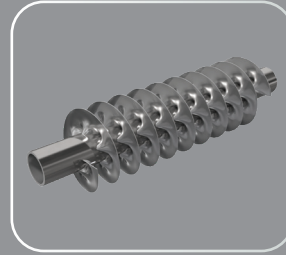
### Coatings:

Blygold™, Heresite™, cataphoresis, powder coating.

### Accessories:

fan, droplet separator, humidifier, defrosting electric resistors.

## Type of Tubes

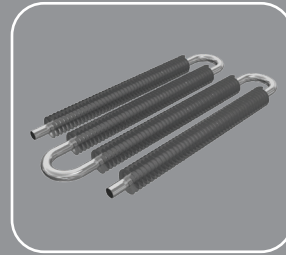


- FINNED TUBES FOR HIGH EFFICIENCY

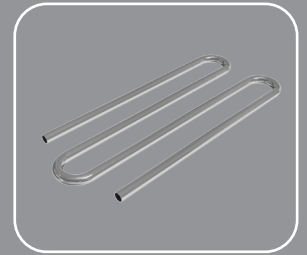


- SMOOTH TUBE

## Seamless Circuits



- SEAMLESS CIRCUITS



- SMOOTH TUBES FOR DIRTY EXHAUST GASES

## Applications



Power



Oil & Gas



Food & Beverage



Chemical



Heavy Industry



Farming & Greenhouse



Naval



HVAC



Refrigeration



Dryer



Transport



Depuration



Offshore plants

